

I would like to save this struct in my PC.

Nombre	Value	Tipo	Visibilidad
UNin301rec_real		383x1	Double
UNin301rec_dec		383x1	Double
UNin301rec_acc	[76.5; 0.94; 0.282]		Double
UNin301rec_pred		383x1	Double
rec_dec		383x1	Double
rec_acc	[76.5; 0.94; 0.282]		Double
rec_pred		383x1	Double
pred		383x1	Double
acc	[76.5; 0.94; 0.282]		Double
dec		383x1	Double
model3in2	N/A	struct (Mlist)	local
test_guarda		383x1	Double
test_label		383x1	Double
train_label		894x1	Double
test_inputs		383x3	Double
train_inputs		894x3	Double
Test		383x13	Double
t		895	Double
Train		894x13	Double
Seg		894	Double
nindex		1277x1	Double
dosnmatriz		1277x13	Double
index		1277x1	Double
l		2	Double
x	[6, 7, 8]		Double
kern		1x1	String
s		2	Double
z		1	Double

When I try to export it to CSV format, the following messages appear:

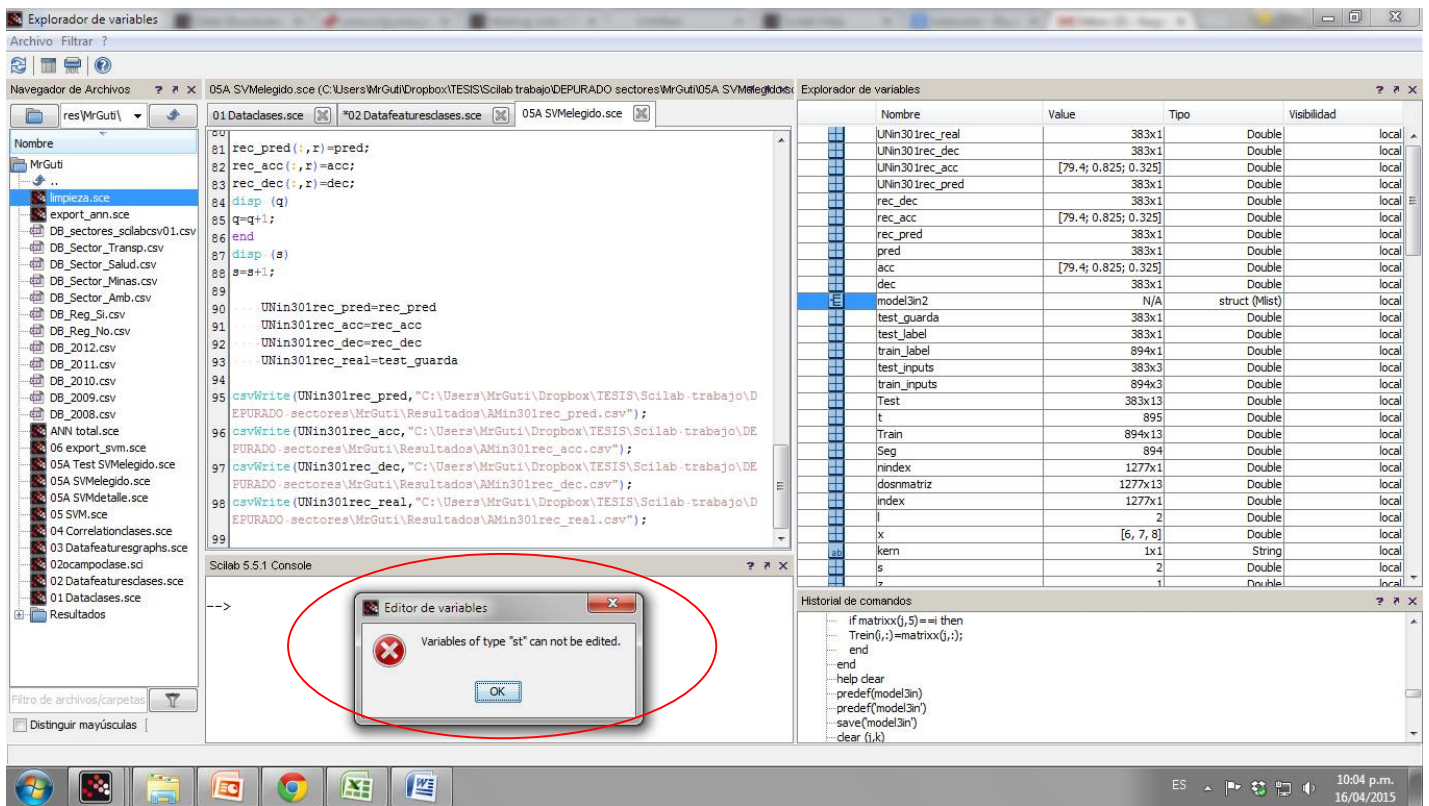
```
01 Dataclasses.sce
63 Test(p, s)=dosnmatriz(j, :);
64 end
65 end
66 p=p+1;
67 end
68
69 train_inputs=[Train(:, x)];
70 test_inputs=[Test(:, x)];
71
72 train_label=[Train(:, 12)];
73 test_label=[Test(:, 12)];
74
75 [test_guarda(:, 1)]=test_label;
76 l=l+1;
77
78 model3in2=libsvm_svmtrain(train_label, train_inputs, kern);
79 [pred, acc, dec]=libsvm_svmpredict(test_label, test_inputs, model3in2);
80
81 rec_pred(:, z)=pred;
82 rec_acc(:, z)=acc;
83 rec_dec(:, z)=dec;
84 disp(q)
85 q=q+1;
```

Scilab 5.5.1 Console

```
csvWrite: Wrong type for input argument #1: A matrix of string
or a matrix of real expected.
```

Context menu for 'model3in2':

- Modify 'model3in2'
- Borrar 'model3in2'
- Export to CSV Ctrl+S
- Plot the matrix



Neither I cannot view the contents of this file in order to save in another format. Scilab message is: *Type not supported for this operation.*

